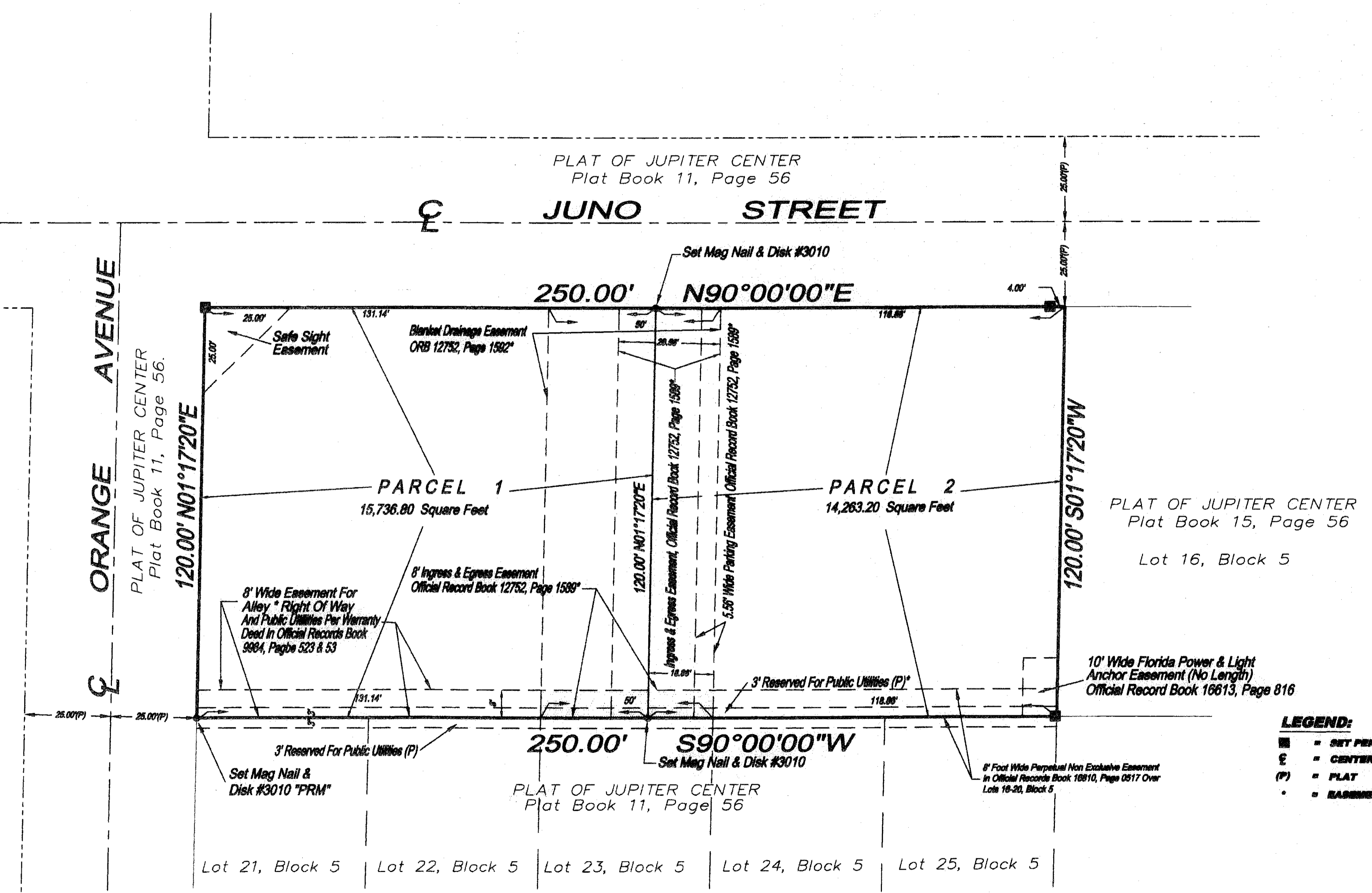
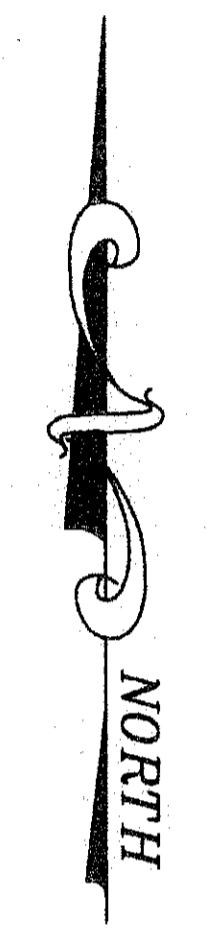
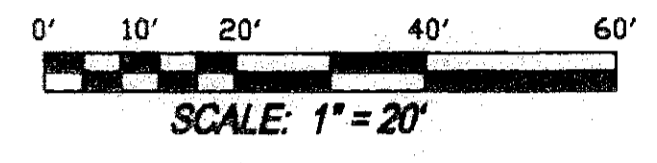


PLAT OF ERICKSON

BEING A REPLAT OF LOTS 16 THROUGH 20, BLOCK 5, PLAT OF JUPITER CENTER, PLAT BOOK 11, PAGE 56 LYING IN THE SECTION 1, TOWNSHIP 41 SOUTH, RANGE 42 EAST, TOWN OF JUPITER, PALM BEACH COUNTY, FLORIDA

FEBRUARY 2008
SHEET 2 OF 2



LEGEND:

- = SET PERMANENT REFERENCE MONUMENT #3010
- ⊕ = CENTERLINE
- (P) = PLAT
- = EASEMENT SHALL REMAIN



THIS INSTRUMENT WAS PREPARED BY:
JOHN J. DEDMAN
JUPITER SURVEYING, INC.
(CERTIFICATE OF AUTHORIZATION #LB 5033)

JUPITER SURVEYING, INC.
6520 195th Place North
Jupiter, Florida 33458
561-744-4594